

Pekatra INDAH

SIMPANG AMPAT, PENANG

Linking Luxuries with Affordability





A woman with long brown hair, wearing a pink long-sleeved shirt, is shown in profile from the chest up. She is looking upwards and to the left with a slight smile. The background is a large window with a white grid pattern, through which bright light is streaming. To the left of the woman, there are some indoor plants in pots. To the right, a white decorative box sits on a surface, and more plants are visible below it.

Linking Luxuries with Affordability

Pekatra Indah is an exclusive, low density neighborhood that offers a lifestyle of freedom, elegance and potential for growth. The bungalow offer extraordinary huge land size from 50'x 80' (4000sf), giving you the freedom to create any desire design. Its unique wide car porch space allows you to park up to 4 cars.

Thoughtfully designed with spacious private garden, high ceiling and fine finishing of house specification.

Pekatra Indah is located strategically at Simpang Ampat, Penang with seamless accessibility to anywhere. It's definitely the choice for you and your family.

SPACIOUS FAMILY LOUNGE



designed for relaxation and connection



FAMILY DINING & KITCHEN SPACE



a space where cooking & gathering come naturally

GRAND MASTER BEDROOM



ample space for relaxation



SERENE PRIVATE GARDEN

for quiet moments and family gatherings



Meticulous details

tailored for your well-being



SPACIOUS CAR PORCH

Park conveniently for the entire family



FLOOR TILES

Clean, sleek and easy to maintain



HIGH CEILING

Enjoy the comfort and airy feeling throughout the home



SEMI-UNDERGROUND CABLE

Ensure a cleaner and safer streetscape



ALARM SYSTEM

Built-in safety features for your protection



CONCEALED AIR-COND PIPING

For a neat and seamless interior



AUTO GATE POINT

Easy upgrade to motorised access

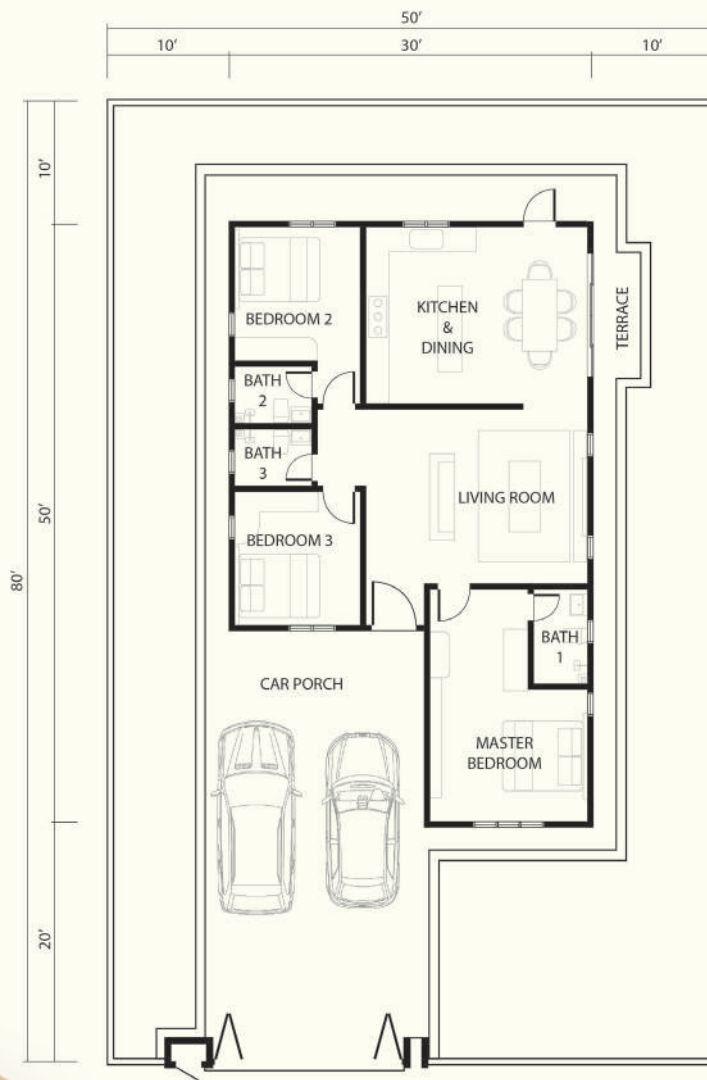
SINGLE STOREY BUNGALOW

(Type A)

3 Bedrooms | 3 Bathrooms

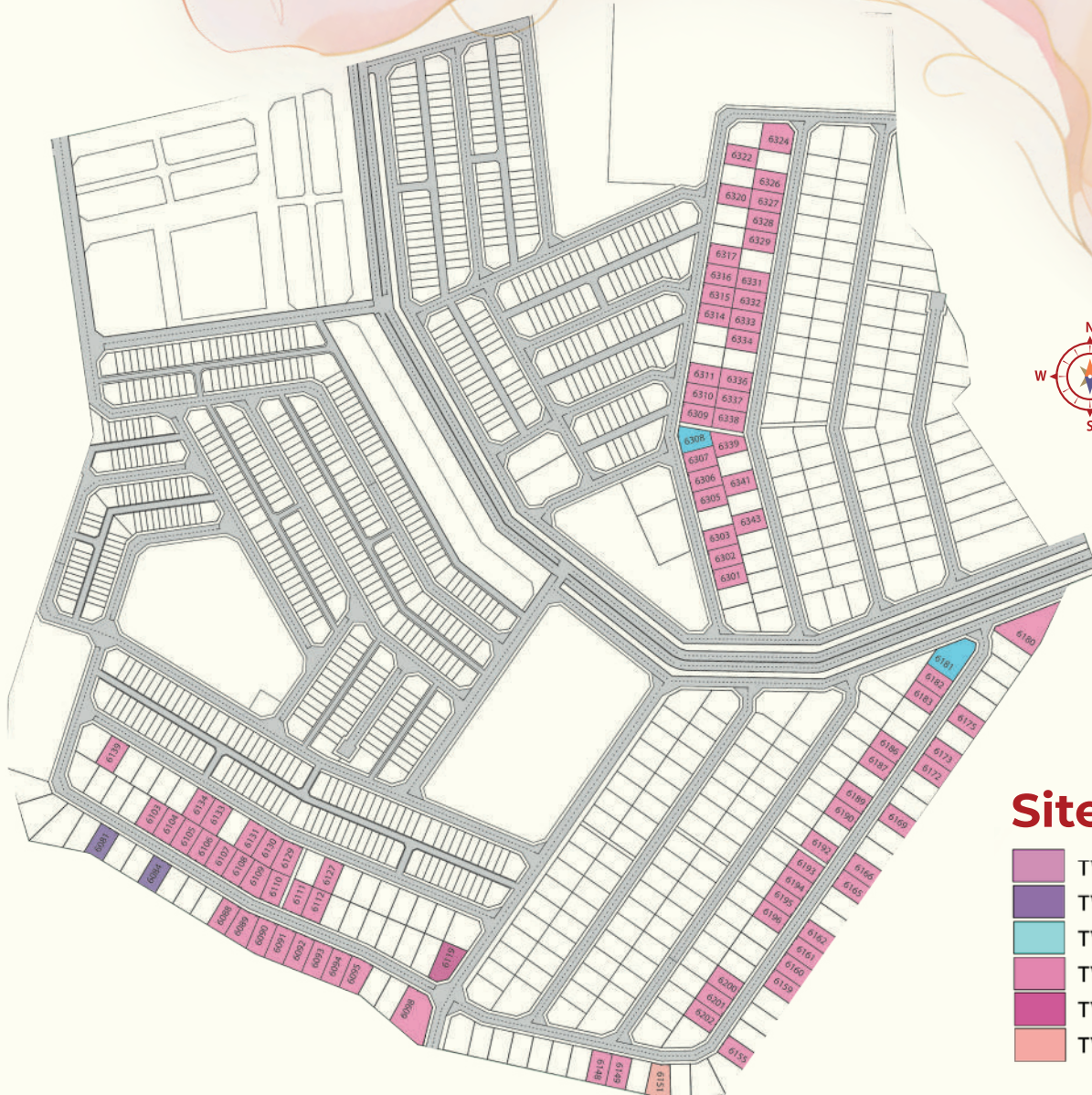
Land Size : 4,000sf - 9,806sf

Built Up Size : 1,528 sqft



Floor Plan





Site Plan

- TYPE A (83 UNITS)
- TYPE B (2 UNITS)
- TYPE C (2 UNITS)
- TYPE D (1 UNIT)
- TYPE E (1 UNIT)
- TYPE F (1 UNIT)

LOCATION



OIB Sales Gallery (Kulim)
940, Jalan Lembah Impiana 5,
Lembah Impiana III, 09000 Kulim, Kedah

012-4010246

f OIBgroup www.oibgroup.com

TAMAN PEKATRA INDAH | Developer Name: Robert Fullerton Realty (Tasek) Sdn. Bhd. | Licence No.: 19946/07-2027/0681(A) | Validity: 29/07/2022 - 28/07/2027 | Permit No.: 19946-2/06-2027/0445(N)-(L) | Validity: 06/06/2025 - 05/06/2027 | Authority Approving Building Plan: MBSP/40/20-75/92(12) | Single Storey Bungalow | Type A | No. of Unit: 83 units | Selling Price: RM764,175 (min) - RM1,222,105 (max) | Type B | No. of Unit: 2 units | Selling Price: RM780,735 (min) - RM780,735 (max) | Type C | No. of Unit: 2 units | Selling Price: 770,385 (min) - RM1,034,425 (max) | Type D | No. of Unit: 1 unit | Selling Price: RM839,500 (min) - RM839,500 (max) | Type E | No. of Unit: 1 unit | Selling Price: RM987,850 (min) - RM987,850 (max) | Type F | No. of Unit: 1 unit | Selling Price: RM819,490 (min) - RM819,490 (max) | Expected Completion Date: Mac 2027 | Land Encumbrances: Nil | Tenure: Leasehold 99 years (18/09/2093) | Disclaimer: All plans, information and specification are subject to variations, modifications and/ or amendments as required by the relevant authorities or developer's consultant/ architect and cannot form part of an offer or contract. All drawings and illustrations contained herein are artist impressions only. THIS ADVERTISEMENT HAS BEEN APPROVED BY THE NATIONAL HOUSING DEPARTMENT. THE APPROVED DEVELOPMENT AND ADVERTISEMENT INFORMATION CAN BE VERIFIED AT THE PORTAL TEDUH.KPT.GOV.MY.