

LOCATION MAP & AMENITIES

Set just at the Northern edges of Sungai Petani, it is convenient and affordable.
It is something idyllic, new and fresh.

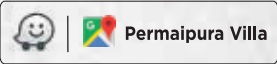


Education Hubs		Healthcare		Shopping Malls / Conveniences		Public Amenities	
SK Seri Aman	3 min	Klinik Kesihatan Bedong	5 min	Mr. DIY	4 min	Permaipura Golf Club	2 min
SMK Bedong	3 min	Klinik Kesihatan Sungai Lalang	9 min	7 Eleven	5 min	Bank Simpanan Nasional	3 min
SMK Aman Jaya	5 min	Hospital Sultan Abdul Halim	13 min	99Speedmart	5 min	Post Office	4 min
AIMST University	11 min	Hospital Pantai Sungai Petani	14 min	Amanjaya Mall	13 min	Petrol Station (Petron)	3 min
		Hospital Pantai Laguna Merbok	14 min	Lotus's (U) Sungai Petani	16 min	Toll (U) Sungai Petani	10 min



OIB Sales Gallery (Sungai Petani):
22, Lengkok Cempaka 1,
Persiaran Cempaka
Amanjaya, 08000 Sungai Petani,
Kedah.

604 448 1888
oibgroup.com



Lorem ipsum dolor sit amet, consectetur adipiscing elit, sed diam nonummy nibh euismod tincidunt ut laoreet dolore magna aliquam erat volutpat. Ut wisi enim ad minim veniam, quis nostrud exerci tation ullamcorper suscipit lobortis nisl ut aliquip ex ea commodo consequat. Duis autem vel eum iriure dolor in hendrerit in vulputate velit esse molestie consequat, vel illum dolore eu feugiat nulla facilisis at vero eros et accumsan et iusto odio dignissim qui blandit praesent luptatum zzril delenit augue duiis dolore te feugait nulla facilisi. Lorem ipsum dolor sit amet, consectetur adipiscing elit, sed diam nonummy nibh euismod tincidunt ut laoreet dolore magna aliquam erat volutpat. Ut wisi enim ad minim veniam, quis nostrud exerci tation ullamcorper suscipit lobortis nisl ut aliquip ex ea commodo consequat. Duis autem vel eum iriure dolor in hendrerit in vulputate velit esse molestie consequat, vel illum dolore eu feugiat nulla facilisis at vero eros et accumsan et iusto odio dignissim qui blandit praesent luptatum zzril delenit augue duiis dolore te feugait nulla facilisi.



A Western-Inspired Living Experience

Permaipura Villa

An avant-garde lifestyle



Bringing you
“A home with a brand new feel,
ambience and style.”



Where sometimes, the first look is
really what matters,

.... to create the feel, to create the
mood, and to create the impression



A gated and guarded lifestyle,
complemented by 3-tier security features.

A guarded grand entrance,
24-hour patrol, and home alarm system.

Carefully crafted for your safety, your security,
your comfort and a peaceful lifestyle.

This is what
'Permaipura Villa'
is all about

Welcoming

Graceful common areas invite community building.



Connecting

Stay connected with neighbours and friends with our pleasant walkways lined with plants and flowers.

Delightfully set in a brand new neighbourhood in Sungai Petani North, designed with spacious walkways, quaint planter boxes of flowers and foliage and an open space which frees the mind and soul.

It is idyllic,
New and Fresh



'Permaipura Villa' homes are crafted within a beautiful Western-inspired landscape that embodies the unique charm of nature, with exclusive white picket fences and spacious 24x70ft. gardens to embrace your creativity and freedom.

Garden of Heaven

A delightfully designed sanctuary of wide and inviting spaces for rest and relaxation...a feast for the eyes and a balm for the soul.



Bask in the beauty of nature,
right at your doorstep.
Breathe in the fresh air, take
in the sunshine, rejuvenate
body, mind and spirit with
nature's gifts and blessings.

A Healthy Lifestyle

Stay fit and active with your very own outdoor gym.



'Permaipura Villa'...
it is all about that something extra



Connect with yourself, connect with nature and
connect with the community.



Spend your days in an environment designed to
embody the best that life has to offer.

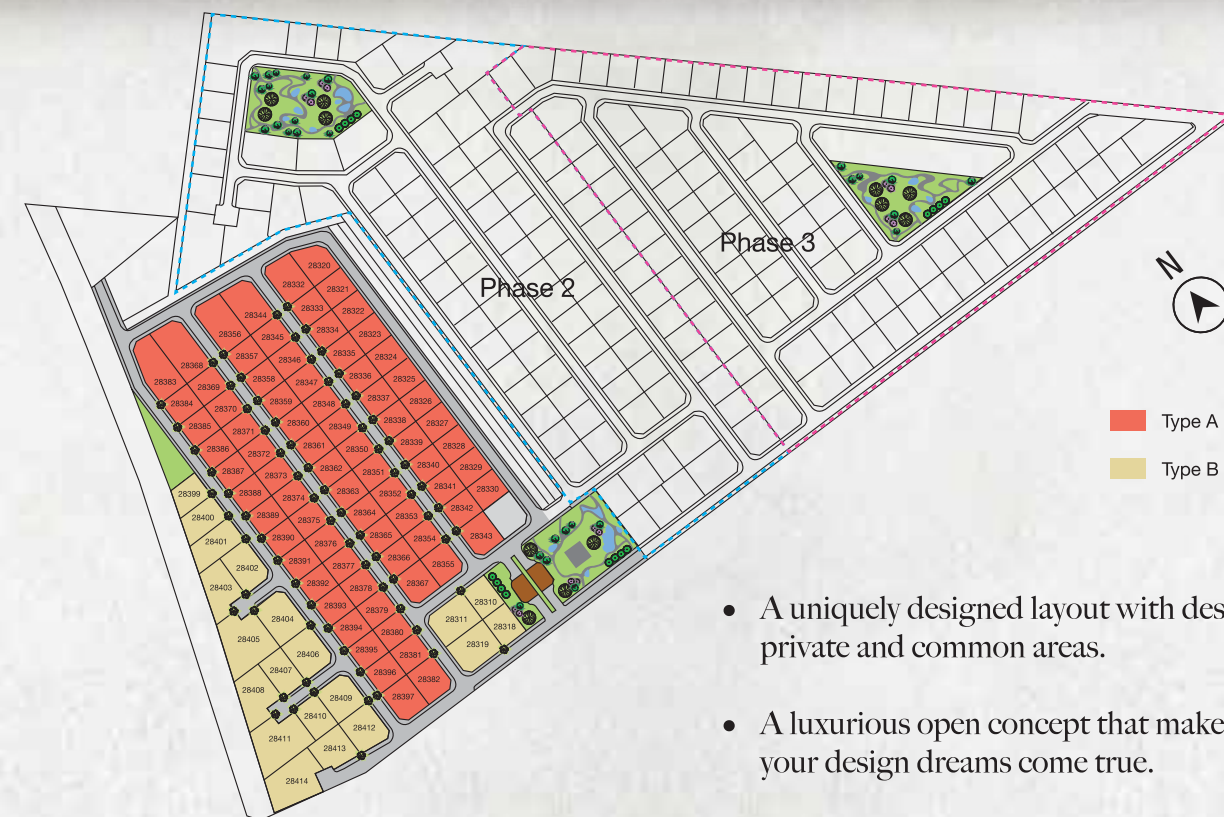
Keep active and fit as you run along tracks set
against the backdrop of Gunung Jerai, exercise
at the outdoor fitness area or tee-off at the
Permaipura Golf Club.

TYPE B

Single Storey Bungalow



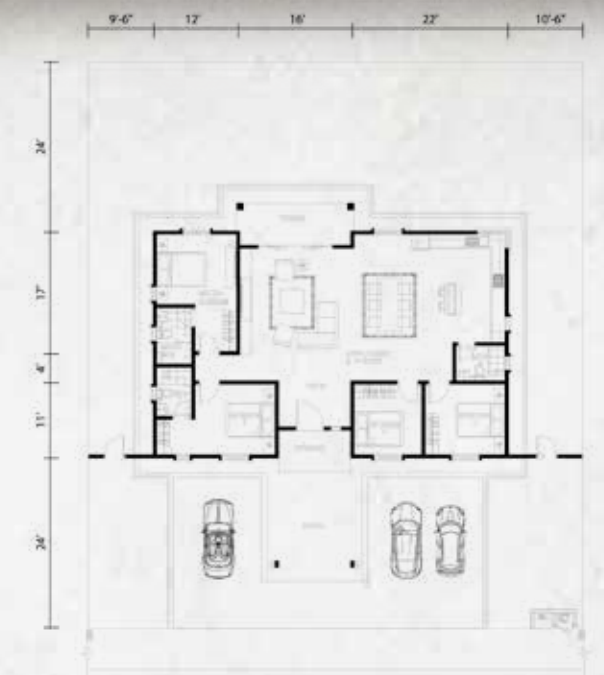
Built up : 1,825 sqft
Land size : 70' x 80'
Rooms : 4 Bed rooms
Bath rooms : 3 Bath rooms
4 Car parks



- A uniquely designed layout with designated private and common areas.
- A luxurious open concept that makes all your design dreams come true.
- A wide car porch for convenience and practicality.
- A low density development with exclusively limited units.

TYPE A

Single Storey Bungalow



Built up : 1,828 sqft
Land size : 70' x 80'
Rooms : 4 Bed rooms
Bath rooms : 3 Bath rooms
4 Car parks